

**A report on the  
accessibility during**

**The Tall Ships Races  
in the city of Halmstad  
in 2011**



Of the Swedish residents, one in five has some sort of disability.

An accessible event is beneficial to everyone – there are no losers.



## The mission

To aim for a high accessibility and usability, clear information and good service, which would benefit everyone.

To make sure to use general solutions that would work for as many as possible.



**THE TALL SHIPS RACES**  
HALMSTAD 5-8 AUG 2011

**Let's close our eyes .. for a moment**

It's the greatest event in Halmstad city ever – would we be able to make the conclusion "Everyone was able to participate"?



The answer should be: "YES, nearly everyone could participate."



**THE TALL SHIPS RACES**  
HALMSTAD 5-8 AUG 2011

## FILM

The film takes up the subject of accessibility, from another perspective.

Please, sit back and follow the story .. Please note the surroundings



**THE TALL SHIPS RACES**  
**HALMSTAD 5-8 AUG 2011**



## How would one create something new from scratch?

- Communicate
- Relate
- Clarity
- Mutual understanding
- Follow the new road ..





## Organisation

- A project team for The Tall Ships Races
- The municipal council for accessibility
- A project group at the social department
- A clear mission
- A project plan
- Documentation
- A report



## FILM

The film takes up the subject of change, one can change and still have fun.

Fimen is with Swedish text, but can certainly be experienced in a good way for everyone.

Please, sit back and follow the story .. please note how people act.

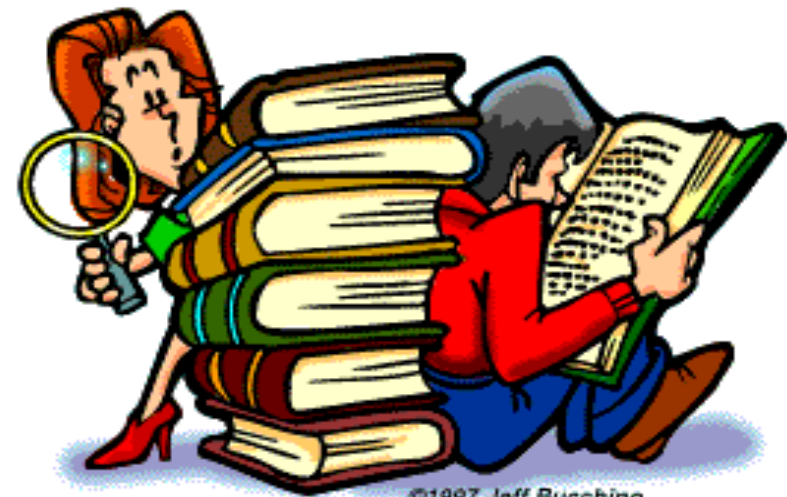


**THE TALL SHIPS RACES**  
**HALMSTAD 5-8 AUG 2011**



## Benchmarking accessibility

- Past events in the municipality of Halmstad
- Other Swedish events
- Knowledge and experience
- Handisam, Swedish Standards Institute
- Documentation
- Photos



©1997 Jeff Bucchino

## Making a difference

*“Our knowledge and opinions should be taken into consideration from the start”*

*Christer Brink*

*DHR and KHR accessibility group*



## An introduction

**Accessibility** – a term used to describe how well an activity, place or premises works for people with disabilities.

**Disability** – Physical or mental impairment that substantially limits one or more major life activities.

**Access barriers** – Any obstruction that prevents people with disabilities from using standard facilities, equipment and resources.

**Attitudes towards people with disabilities**

**Booklet**

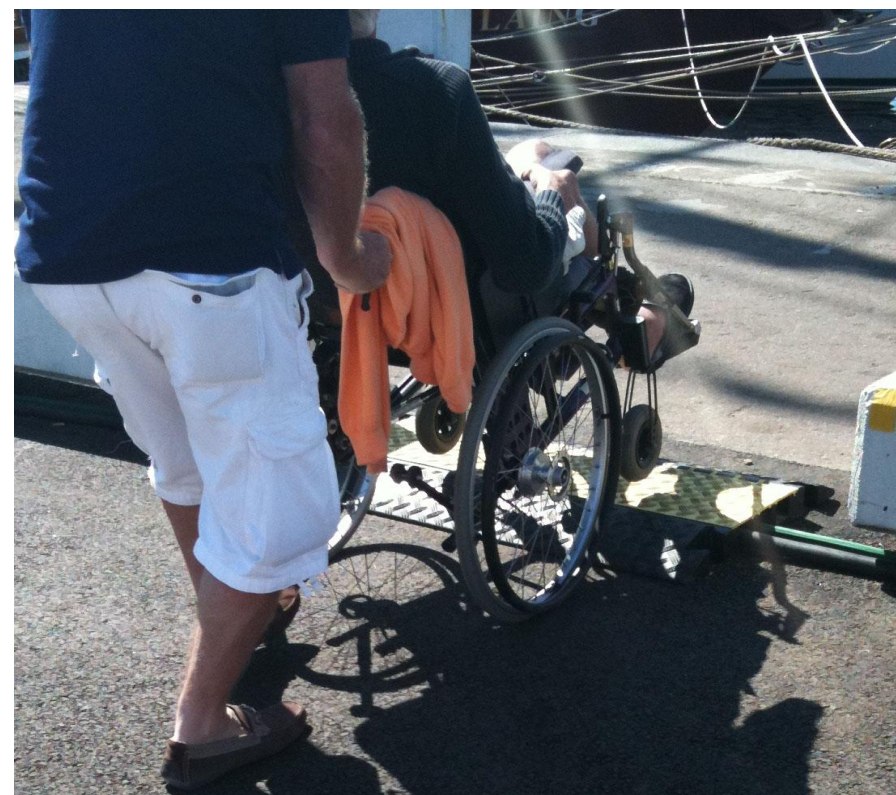


## Some of the things we focused on

- Getting around
- A platform (gallery) for people with disabilities
- The restaurant areas
- Parking areas, transportation service and buses
- Lavatories
- Interpreters
- Accessible ships
- Participation in the race
- Checklist



## Getting around





## Getting around



**THE TALL SHIPS RACES**  
**HALMSTAD 5-8 AUG 2011**

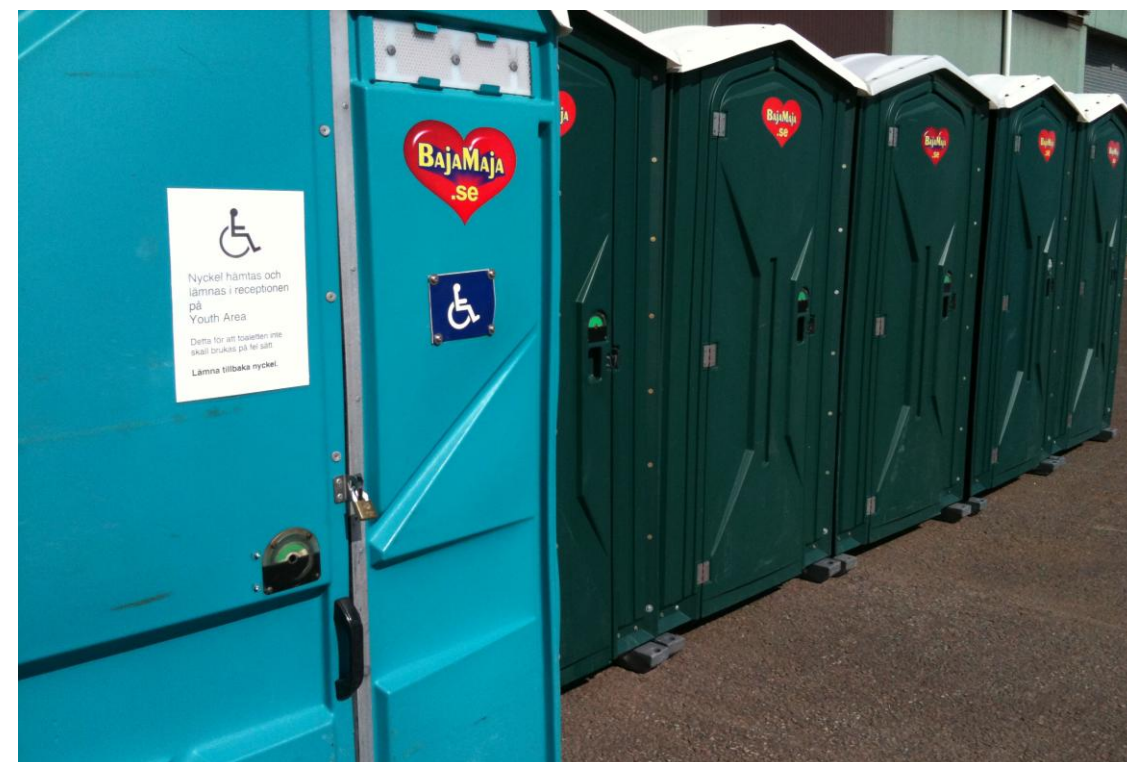
## Platform for people with disabilities



## The restaurant area



# Lavatories



## Parking areas



**THE TALL SHIPS RACES**  
**HALMSTAD 5-8 AUG 2011**

# Interpreters and guides



**THE TALL SHIPS RACES**  
**HALMSTAD 5-8 AUG 2011**

## An accessible ship



## Participation in the race





## Checklist and inspections

- A checklist for accessible events
- Inspecting an accessible event
- Announced that we would conduct a survey regarding accessibility

1. Entré	Ja	Nej	Signatur
a. Alla besökare, oavsett funktionsförmåga, kommer in till evenemanget genom samma entré			
b. Det finns en plats inom högst 25 meter från entrén där färdtjänst och taxi kan hålla till			
c. Det finns reserverade parkeringsplatser inom 25 meter från entrén för personer med funktionsnedsättning			
d. Gångvägen fram till entrén är framkomlig för personer med rörelsehinder och funktionssvårigheter			
e. Höjdskillnader är kompletterade med ramp som är minst 1,5 meter bred och har en lutning på max 1:20			

2. Ytor	Ja	Nej	Signatur
a. Uppbyggda hinder har en avfasad passage eller ramp			
b. "Flaskhalspassager" undviks i möjligaste mån			
c. Höjdskillnader är kompletterade med ramp som är minst 1,5 meter bred och har en lutning på max 1:20			
d. Ytorna är rena från hinder som till exempel gatupratrare, cyklar och blomlådor			
e. Ytorna är utmärkta på så sätt att man enkelt kan ta sig fram			
f. Det finns sitt- och viloplatser jämnt fördelade över området			

3. Information	Ja	Nej	Signatur
a. Annonseringen inför evenemanget finns i en tillgänglig variant			
b. Webbplatsen har en lättläst variant och möjlighet att välja teckenstorlek			

## Low accessibility

- The sightseeing train didn't have a coach for wheelchairs
- The amusement park
- Some of the stalls
- The disability information stall
- All but one ship



## Conclusions

- It's a process to introduce accessibility and to explain it
- Communication and dialogue
- Clarity, ownership
- Economy, contracts with suppliers of goods and services



**A good general accessibility and a welcoming attitude goes a long way...**



**THE TALL SHIPS RACES**  
**HALMSTAD 5-8 AUG 2011**

## Contact

**Hasse Olsson**

Project Manager Accessibility  
The Tall Ships Races Halmstad 2011

**Phone**

+46 70 514 68 56

**E-mail**

hasse.olsson@halmstad.se

**Websites**

[www.halmstad.se](http://www.halmstad.se)

[www.tallshipsraceshalmstad.se](http://www.tallshipsraceshalmstad.se)



## Halmstad – a city for everyone

- Build on this project and work with Handicapfriendly City (EU 97-01) in mind
- Take advantage of the social networks that were created and the dedication that emerged
- Create a symbol for accessibility in Halmstad municipality
- Create the most accessible tourist destination in Sweden

